

Laivalahdenkatu 6c A 12, Helsinki, HERTTONIEMI

# 51 m<sup>2</sup>, 2H+KT

Sales agent

**Laura Jaakkola**

0201612236

[laura.jaakkola@asuntosaaatio.fi](mailto:laura.jaakkola@asuntosaaatio.fi)

## Apartment info

### Housing costs

Prices are estimates for now.

#### Right-of-occupancy payment

42214,79€

– Original right-of-occupancy payment  
42214,79€

#### Residence charge

1028,98€

– Basic charge  
909,15€

– Communal charge  
119,83€

#### Security deposit

250€

#### Advance water fee/person/month

25€

#### Parking fees

– Autohallimaksu 1  
60,00€

#### Sauna fee

20,00€

### Apartment basic info

#### Housing type

Apartment house

#### Energy class

A2018

#### Apartment type

2H+KT

#### Living area

51.00 m<sup>2</sup>

#### Floor

3

#### Balcony

1

#### Own sauna

No

#### Elevator

Yes

#### Estimated completion date

31.10.2026

#### Condition

Excellent

**Pets**  
Allowed

**Broadband**  
DNA Netti

## Smoking in our apartments

It has been a long-term policy of ours to make all of our new residential properties completely non-smoking. We are gradually making all of our apartments non-smoking; the agreements of new residents will forbid smoking in the apartments and on the balconies from 1 January 2021 onwards. The property may not be completely non-smoking due to other apartments that may be subject to old agreements with no smoking prohibitions.

# Laivalahdenkatu 6c A 12 / 2H+KT, 51,0 m<sup>2</sup> A6, A12, A18, A24, A29.jpg

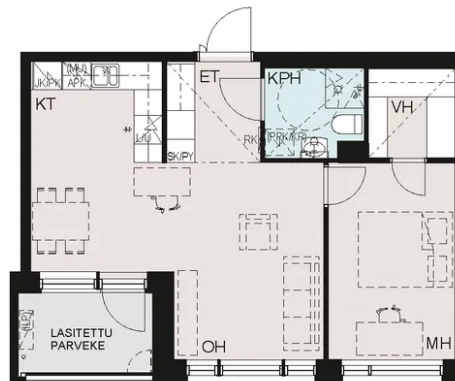
Not in scale

## Laivalahdenkatu 6c

Asuntojen pohjapiirrokset

2H+KT, 51,0 m<sup>2</sup>

Asunto A6 2. kerros  
Asunto A12 3. kerros  
Asunto A18 4. kerros  
Asunto A24 5. kerros  
Asunto A29 6. kerros



- Asuntoon kuuluvat kalusteet, laitteet ja koneet
- Märkätilä
- Laminaattipääilysteinen lattia
- Parveke betonilattialla



0m 5m

4.9.2025 | Suuntaa antava mittakaava