

Piilipuuntie 4 A 1, Espoo, SUURPELTO

**101 m<sup>2</sup>, 4H+KT+S**

Sales agent

**Päivi Tulokas**

0201612478

paivi.tulokas@asuntosaaatio.fi

## Apartment info

### Housing costs

Prices are estimates for now.

#### Right-of-occupancy payment

65775,09€

– Original right-of-occupancy payment  
65775,09€

#### Residence charge

1506€

– Basic charge  
1239,94€

– Communal charge  
266,06€

#### Security deposit

250€

#### Advance water fee/person/month

25€

#### Parking fees

– Autopaikkamaksu 1  
20,00€

### Apartment basic info

#### Housing type

Terraced house

#### Energy class

A2018

#### Apartment type

4H+KT+S

#### Living area

101.00 m<sup>2</sup>

#### Floor

1-2

#### Own sauna

Yes

#### Separate toilet

Yes

#### Elevator

No

#### Estimated completion date

Available now

#### Condition

Excellent

**Pets**  
Allowed

## Smoking in our apartments

**Broadband**  
DNA Netti

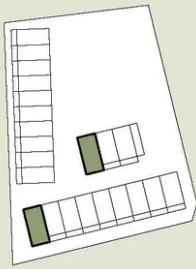
It has been a long-term policy of ours to make all of our new residential properties completely non-smoking. We are gradually making all of our apartments non-smoking; the agreements of new residents will forbid smoking in the apartments and on the balconies from 1 January 2021 onwards. The property may not be completely non-smoking due to other apartments that may be subject to old agreements with no smoking prohibitions.

# Piilipuuntie 4 A 1 / Piilipuuntie 4\_A1\_C14.jpg

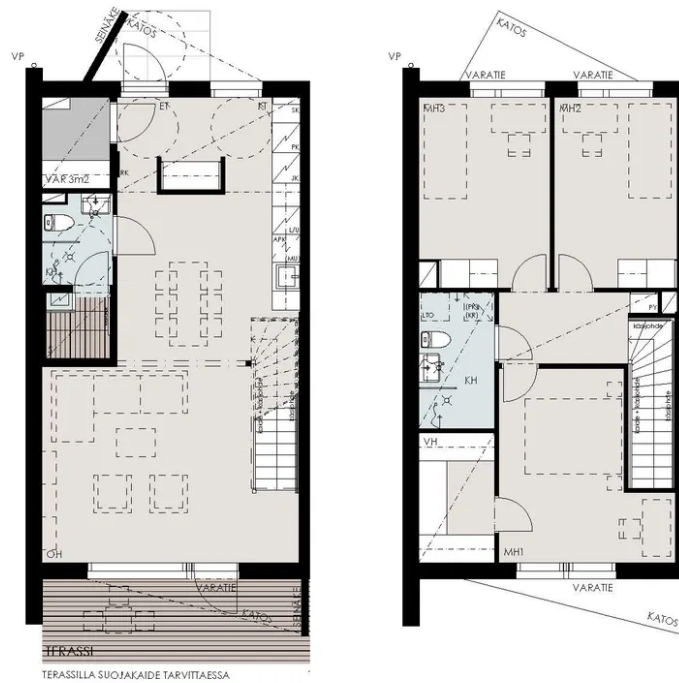
Not in scale

**Piilipuuntie 4**  
Asuntojen pohjapiirrokset

4H+KT+S, 101 m<sup>2</sup> + varasto 3,0 m<sup>2</sup>  
Asunto A1 1. ja 2. kerros  
Asunto C14 1. ja 2. kerros



18



- Asuntoon kuuluvat kalusteet, laitteet ja koneet
- Märkätila
- Saunan lauteet
- Laminaattipääilytelinen lattia
- Terassi tai parveke lautalattialla



0m 5m

20.2.2025 | Suuntaa antava mittakaava