

Viulukonsertonkuja 6a as 24, Järvenpää, Ainola

**82,5 m<sup>2</sup>, 4H+KT**

Sales agent

**Karita Koppinen**

karita.koppinen@asuntosaaio.fi

## Apartment info

### Housing costs

Prices are estimates for now.

#### Right-of-occupancy payment

41815,98€

– Original right-of-occupancy payment  
41815,98€

#### Residence charge

1200,49€

– Basic charge  
991,71€

– Communal charge  
208,78€

#### Security deposit

250€

#### Advance water fee/person/month

25€

#### Parking fees

– Autopaikka/inva  
20,00€

#### Sauna fee

20,00€

### Apartment basic info

#### Housing type

Apartment house

#### Energy class

A2018

#### Apartment type

4H+KT

#### Living area

82.50 m<sup>2</sup>

#### Floor

6

#### Balcony

1

#### Own sauna

No

#### Elevator

Yes

#### Estimated completion date

03/2026

#### Condition

Excellent

**Pets**  
Allowed

## Smoking in our apartments

**Broadband**  
DNA Netti

It has been a long-term policy of ours to make all of our new residential properties completely non-smoking. We are gradually making all of our apartments non-smoking; the agreements of new residents will forbid smoking in the apartments and on the balconies from 1 January 2021 onwards. The property may not be completely non-smoking due to other apartments that may be subject to old agreements with no smoking prohibitions.

# Viulukonsertonkuja 6a as 24 / Viulukonsertonkuja 6aA4,9,14,19,24,29\_4H\_KT\_82\_5\_m2.jpg

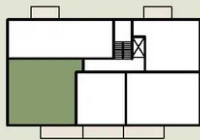
Not in scale

## Viulukonsertonkuja 6 A

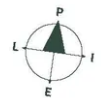
Asuntojen pohjapiirrokset

4H+KT, 82,5 m<sup>2</sup>

Asunto A4 2. kerros  
Asunto A9 3. kerros  
Asunto A14 4. kerros  
Asunto A19 5. kerros  
Asunto A24 6. kerros  
Asunto A29 7. kerros



- Asuntoon kuuluvat kalusteet, laitteet ja koneet
- Märkätilä
- Laminaattipääilysteinen lattia
- Parveke betonilattialla



0m 5m

20.2.2025 | Suuntaa antava mittakaava