

Spinellipolku 3 A 26, Vantaa, KIVISTÖ

**39,5 m<sup>2</sup>, 2H+KT**

Sales agent

**Lassi Taipale**

020 161 2263

lassi.taipale@asuntosaatio.fi

## Apartment info

### Housing costs

**Right-of-occupancy payment**

28170,83€

– Original right-of-occupancy payment  
27242,92€

– Index adjustment  
927,91€

**Residence charge**

611,95€

– Basic charge  
522,08€

– Communal charge  
89,87€

**Security deposit**

250€

**Advance water fee/person/month**

25€

**Parking fees**

– Autohallimaksu 1  
50,00€

**Sauna fee**

20,00€

### Apartment basic info

**Housing type**

Apartment house

**Energy class**

B2018

**Apartment type**

2H+KT

**Living area**

39.50 m<sup>2</sup>

**Floor**

4

**Balcony**

1

**Own sauna**

No

**Elevator**

Yes

**Available**

Available now

**Condition**

Excellent

**Pets**  
Sallittu

---

**Broadband**  
DNA Netti

---

## Smoking in our apartments

---

It has been a long-term policy of ours to make all of our new residential properties completely non-smoking. We are gradually making all of our apartments non-smoking; the agreements of new residents will forbid smoking in the apartments and on the balconies from 1 January 2021 onwards. The property may not be completely non-smoking due to other apartments that may be subject to old agreements with no smoking prohibitions.

**Spinellipolku 3 A 26 /  
Spinellipolku+3\_huoneistopohja\_A10\_jne.jpg**

Not in scale

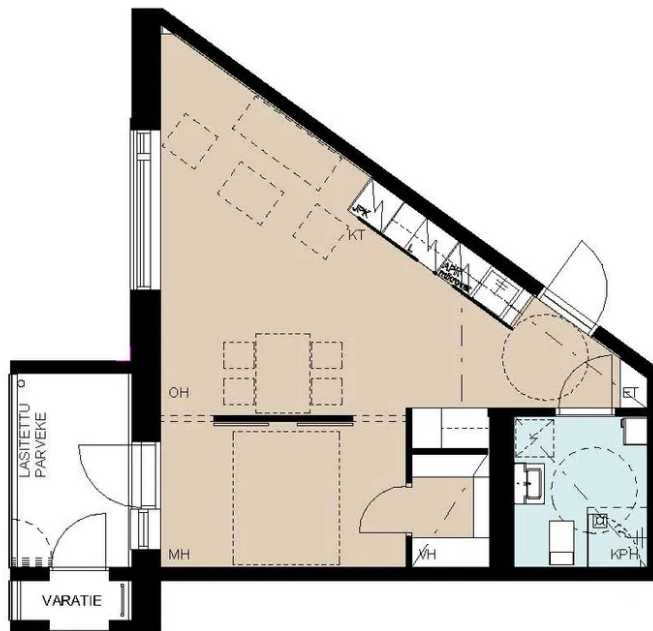
## Spinellipolku 3

Spinellipolku 3, 01700 Vantaa

15.10.2021

2h + kt 39,5 m<sup>2</sup>

- 2. krs A10
- 3. krs A18
- 4. krs A26
- 5. krs A34
- 6. krs A42
- 7. krs A50
- 8. krs A58



### huoneistopohjat

Katkoviivoilla esitetyt kalusteet ovat viitteellisiä, eivätkä ne sisälly asunnon hankinta-arvoon.  
Alaslasketut katot, koteloit ja radiaattorit on merkitty viitteellisesti, laajuudet voivat muuttua suunnittelun edetessä.  
Rakennutta ja pidättää oikeuden suunnitelma muutoksiin. Pohjakuvat eivät ole mittakaavassa.

0 1m 3m  
1:100

